

TIPS FROM OUR READERS

A straightforward technique for removing the screw-retaining protective material of an implant-supported restoration channel with cut-and-used endodontic rotary files

Francisco Real-Voltas, PhD, DDS^a and Sara Sabrià-Girbal, DDS^b

Cotton pellets¹ or polytetrafluoroethylene tape (PTFE) can be inserted to protect the head of the retaining screw of an implant-supported crown.² PTFE tape is preferred because it is sterilizable, easy to handle, radiopaque, and odorless.² When accessing the retaining screw, removal of the PTFE tape can be challenging. This tip shows a rapid and straightforward procedure for removing a cotton pellet or PTFE tape with used endodontic rotary files.

PROCEDURE

1. Cut a previously used and resterilized endodontic rotary files (ProTaper; Dentsply Sirona), leaving around 2 or 3 mm of the active head (Fig. 1). If insufficiently cut, the file tip will be narrow and too flexible.
2. Remove the composite resin plug from the screw channel with a high-speed rotary instrument.
3. Rotate the cut endodontic file mounted in a slow-speed contra-angle clockwise and hook the cotton pellet or the PTFE tape. The protective material will be rolled out, permitting access to the retaining screw (Fig. 2).



Figure 1. New and used-and-cut rotary endodontic files (ProTaper; Dentsply Sirona).

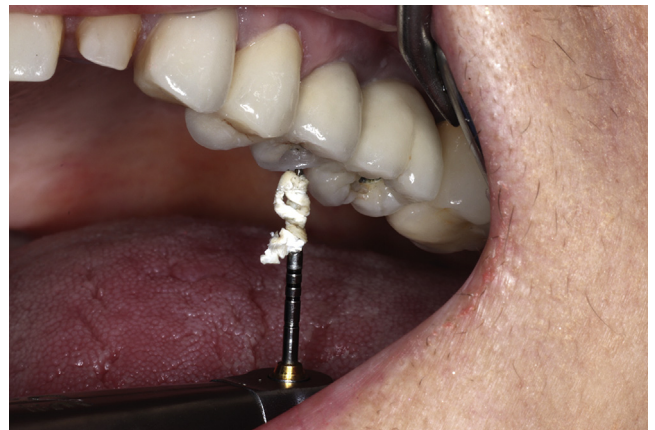


Figure 2. Polytetrafluoroethylene tape hooked on endodontic rotary file.

4. Clean and resterilize the cut endodontic file for reuse.

REFERENCES

1. Saboury A, Mahshid M, Tabatabaian F, Moghadam L. Effect of screw access hole design on the fracture resistance of implant-supported zirconia-based restorations. *J Esthet Restor Dent* 2018;30:545-50.
2. Moraguez OD, Belser UC. The use of polytetrafluoroethylene tape for the management of screw access channels in implant-supported prostheses. *J Prosthet Dent* 2010;103:189-91.

Corresponding author:

Dr Francisco Real-Voltas
s/n Josep Trueta St
08195 Sant Cugat del Vallés
Barcelona
SPAIN
Email: freal@uic.es

Copyright © 2020 by the Editorial Council for *The Journal of Prosthetic Dentistry*.
<https://doi.org/10.1016/j.prosdent.2020.05.015>

^aAssociate Professor, Department of Prosthodontics, School of Dentistry, International University of Catalonia, Barcelona, Spain.

^bPrivate practice, Girona, Spain.